



GRIP Mustang GT/V6 Body Kit

GRIP highly recommends that our kits be installed by professionals with experience installing automotive aftermarket parts and accessories. However, we do recognize that many customers will install their own kits. GRIP will not issue refunds for improper installation, resulting in poor alignment and fit of the kit.

All kits are sold with necessary attaching hardware. Some fasteners already on your vehicle may be reused, so care must be taken during removal.

PLEASE NOTE: All GRIP body kits need to be properly sanded and primed before painting, even if the part arrives pre-primed. Failure to properly prepare parts before painting can result in poor paint finish and adhesion. Please pre-fit parts before painting! Once a part has been painted or modified in any way it cannot be returned.

NOTE : ***GRIP will not be liable for any damage incurred in the installation of the kit. Any damage incurred will be the installer's responsibility.***

These instructions are for both the GT and V6 models. Any differences are noted.

Front Lip Kit

Note: parts need to be prepared/sanded to remove any surface irregularities before painting. Additional trimming or heating may be required for best fit.

1. Carefully jack the vehicle up off of the ground enough so that you can remove the wheels. After placing jack stands, remove the front wheels.
2. Test fit the left and right lip kit sections. Take note of the areas where the pieces will attach to the body. If there are any irregularities due to vehicle build variances make adjustments as necessary. See Figure A.
3. Clean the area where the 3M tape will contact the vehicle surface with isopropyl alcohol (rubbing alcohol) to make sure that the surface is clean and free from dirt/wax to ensure best adhesion. Let the area dry thoroughly prior to installing.

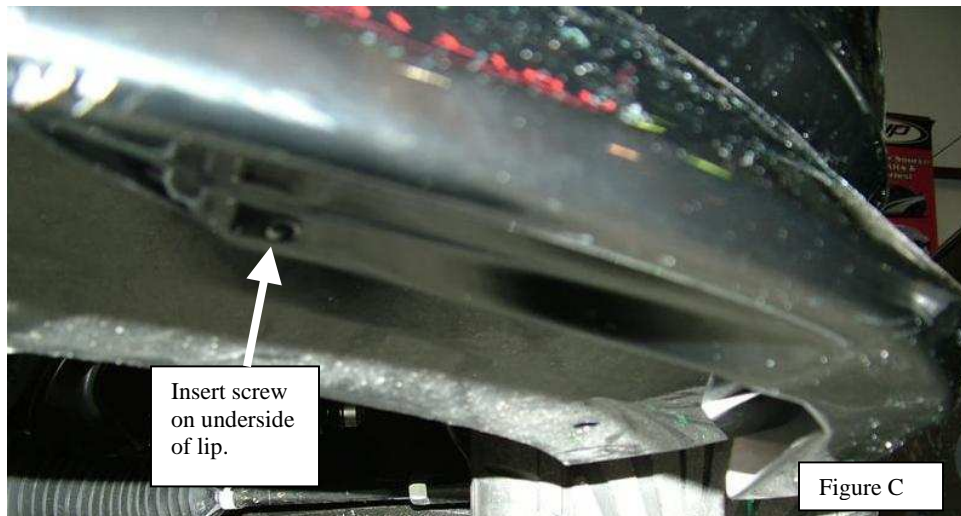


Figure A

Note: Each of the front lip pieces contain a dimpled area, these dimples may not necessarily line up with the holes in the front wheel openings.

4. Peel 2" sections of the red tape liner back on all areas that have tape and fold over the part. Using a helper, install part utilizing the exposed 2" sections of tape to allow you to line the lip kit pieces onto the stock fascia.
5. When the GRIP part is mounted in a satisfactory location, start pulling the red tape liner off of the rest of the parts, pressing the GRIP parts down onto the OEM fascia. See Figure A.

6. Go around to the flange in wheel well.
Using an 1/8" bit drill 2 holes for supplied screws. See Figure B.
7. Install supplied screws into the holes you just drilled. See Figure B. Make sure these screws are tight.
8. Drill hole with 1/8" bit and install screw on underside of left and right front lip kit piece. See Figure C.



Rocker

Note: parts need to be prepared/sanded to remove any surface irregularities before painting. Additional trimming or heating may be required for best fit.

1. Place vehicle on jack stands and remove wheels.
2. Dry fit the GRIP rocker to the vehicle, verify proper fit.
3. Remove the 2 lower, plastic fasteners in the front wheel well splash shield. These fasteners will not be reused and may be discarded.
4. 2 people will be needed to hold the rocker in place. Mark the GRIP rocker where the 2 holes are on the front splash shield, and drill holes in GRIP rocker that are the same size/location as stock. Mark and drill 2 holes at rear of rocker. See arrows in Figure D. Note: Any dimpled areas on rockers may not necessarily line up with existing holes.
5. Clean the area where the 3M tape will contact the vehicle surface with isopropyl alcohol (rubbing alcohol), the surface *must* be clean and free from dirt/wax for best adhesion. Let the area dry thoroughly prior to installing.
6. Peel back an approximate 2” section of the red tape liner backing on all areas where the tape strip is present and fold over part. Using a helper, install part utilizing the exposed 2” sections of tape to allow you to line the GRIP rocker to the vehicle. See Figure D.
7. When the GRIP rocker is mounted in a satisfactory location, start pulling the red tape liner off of the rest of the part, firmly pressing the GRIP part down onto the sheet metal. See Figure D.



8. Insert supplied pushpin fasteners into the front 2 holes, use supplied screws for holes drilled at rear.
9. *Double check all taped surfaces, pressing firmly to ensure full engagement.* Rocker is now installed.

GRIP Tuning 800-435-1197 Technical Support 866-928-4968

www.griptuning.com

Page 4

Rev. 1 – 11/18/2008

Rear Lip Kit

Note: parts need to be prepared/sanded to remove any surface irregularities before painting. Additional trimming or heating may be required for best fit.

1. Jack up the vehicle, and remove the rear tires. *The installation process for the GRIP Rear Lip Kit is very similar to that of the front kit.*
2. Test fit the rear lip pieces. Take note of the areas where the fascias attach to the body. If there are any vehicle build irregularities, make adjustments as necessary.
3. Clean the area where the 3M tape will contact the vehicle surface with isopropyl alcohol (rubbing alcohol), the surface *must* be clean and free from dirt/wax for best adhesion. Let the area dry thoroughly prior to installing.

Note: The Right and Left rear lip piece each contain a dimpled area, these may not necessarily line up with existing holes in the rear wheel openings.



Figure E

4. Peel back an approximate 2” section of the red tape liner backing on all areas where the tape strip is present and fold over part. Using a helper, install part utilizing the exposed 2” sections of tape to allow you to line the GRIP part onto the stock fascia. See Figure E.
5. When the GRIP part is mounted in a satisfactory location, start pulling the red tape liner off of the rest of the part, pressing the GRIP part down onto the OEM fascia. See Figure E.

6. In the rear wheel well drill pilot holes with 1/8" bit, install supplied screws. See Figure F.
7. **V6 ONLY.** Drill hole with 1/8" bit and install screw on underside of left and right rear lip kit piece. See Figure G.



Rear Spoiler

Note: parts need to be prepared/sanded to remove any surface irregularities before painting. Additional trimming may be required for best fit.

1. Test fit the spoiler. Take note of the areas where the spoiler attaches to the body. If there are any vehicle build irregularities, make adjustments as necessary.
2. Clean the area where the 3M tape will contact the vehicle surface with isopropyl alcohol (rubbing alcohol), the surface *must* be clean and free from dirt/wax for best adhesion. Let the area dry thoroughly prior to installing.
3. Peel back an approximate 2” section of the red tape liner backing on all areas where the tape strip is present and fold over part. Using a helper, install part utilizing the exposed 2” sections of tape to allow you to line the GRIP spoiler onto the body. See Figure G.
4. When the GRIP part is mounted in a satisfactory location, start pulling the red tape liner off of the rest of the part, pressing the GRIP part down onto the body. See Figure G.



If you have any questions or need advice regarding your installation, feel free to contact one of our installation specialists at 866-928-4968.